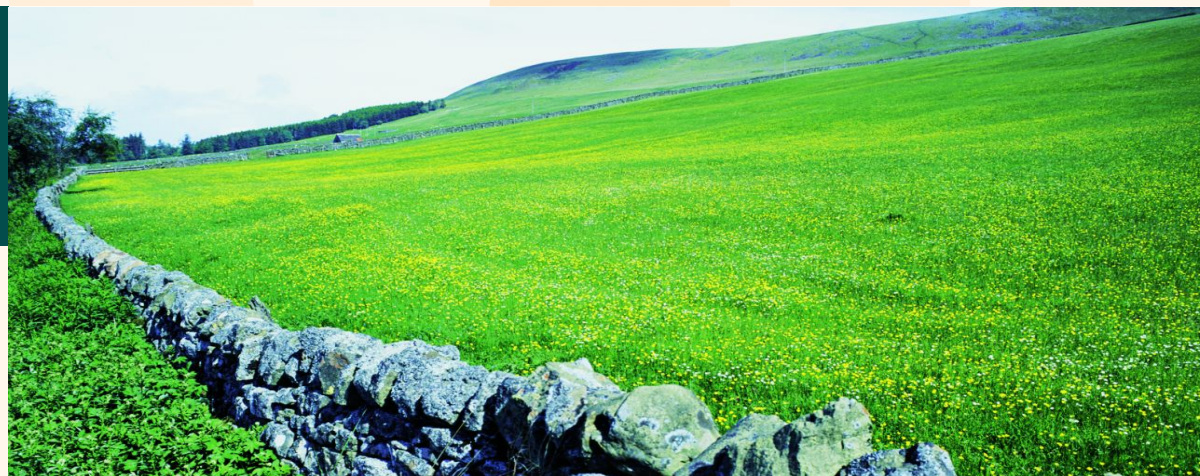




European Commission
Agriculture and Rural Development



Rural development policy

EU perspective on the regulation

JB. Benhaiem

European Commission

Co-ordinator for UK Rural Programmes



State of play (regulatory framework)

- Council Regulation 1698/2005 on support for rural development by the EAFRD, adopted September 2005
- Council Regulation 1290/2005 on the financing of the CAP, adopted June 2005
- Implementing rules (general, transition): draft available, presented to MS at STAR meetings (Jan./Feb. 2006)



State of play (strategy)

- Community Strategic Guidelines, agreement on text in Council, adopted February 2006
- National Strategy Plans, template document presenting guidance on establishing the NSP presented and discussed in STAR (November 2005)



State of play (CMEF)

- 2 expert meetings already held with MS on the **C**ommon **M**onitoring and **E**valuation **F**ramework and the indicators to be used.
- The minimum list of common indicators is part of the implementing rules
- Based on the discussion with the MS a handbook is being elaborated, which will provide detailed guidance for monitoring and evaluation.



The 4 elements complete the picture from the Commission side:

- Council regulations
- Implementing regulations
- Community Strategic Guidelines (plus template for NSPs)
- CMEF (including handbook)

Still missing is the funding (final adoption of financial perspectives, allocation of money to MS)



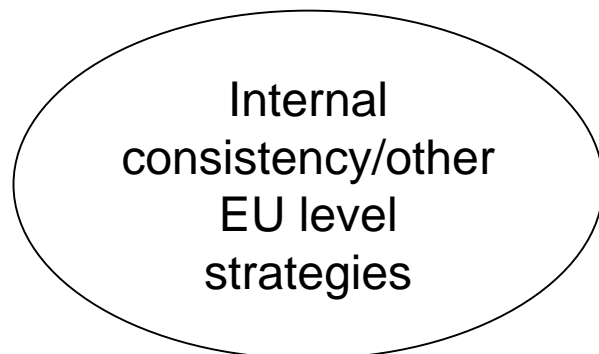
The RD strategies and programmes will be built around:

- Competitiveness of the agri-food and forestry sectors with emphasis on restructuring/modernisation, knowledge transfer and innovation, and quality in the food chain
- Environment/land management with emphasis on biodiversity, water and climate change
- Creation of employment opportunities and growth conditions through diversification of the rural economy and enhancing the quality of life in rural areas
- Improving governance and local development through bottom up approaches



In designing the strategies and programmes consideration will need to be given to:

- Internal consistency, maximising synergies between the axes and measures
- The links to other EU level strategies
- Complementarity with other Community funding instruments



CSG



NSP

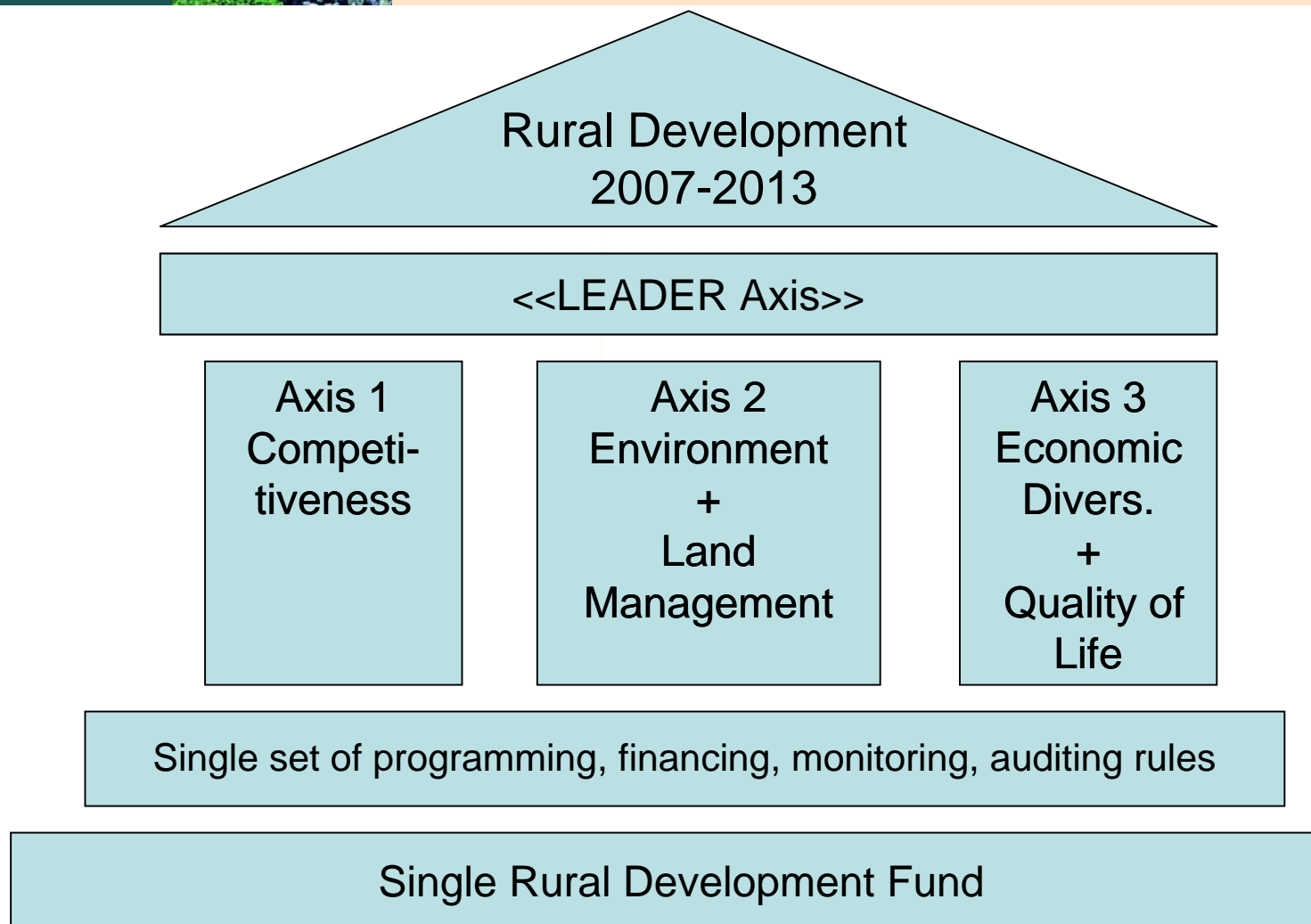
- EU priorities:
- Knowledge transfer/priority investment sectors
 - Biodiversity/water/climate change
 - Creation employment opportunities
 - Governance/local development

+ National priorities



NSP template

- *Chapter 1:* Baseline analysis of the economic, social and environmental situation and setting of the baseline indicators
- *Chapter 2:* Overall strategy, translation of Community priorities and setting of national priorities
- *Chapter 3:* Strategy per axis, including quantified targets and objectives and indicators to be used
- *Chapter 4:* RDPs and their indicative allocation, including Convergence amounts
- *Chapter 5:* internal and external consistency of the NSP, complementarity with other Community funding instruments
- *Chapter 6:* Amount and set up for the national rural network





RDPs:

Example of programme balance based on a Community contribution of 100

		%	EUR
axis 1	min	10	9.6
	max	65	62.4
	programmed	30	28.8
	of which axis 4		0
axis 2	min	25	24
	max	80	76.8
	programmed	55	52.8
	of which axis 4		2.4
axis 3	min	10	9.6
	max	65	62.4
	programmed	15	14.4
	of which axis 4		4.8
total axis 1-3		100	96
axis 4	min	5	4.8
	max	100	96
	programmed*	7.5	7.2
TA	set at max	4	4
total programmed			100

* 1/3 axis 2, 2/3 axis 3



Within the minimum and maximum spending rate for each axis, the weighting of EU and national priorities will depend on

- the assessment of strengths & weaknesses (baseline)
- the needs
- the ‘carry over’ of the previous programming period



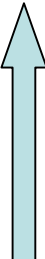
Overview

STRATEGY



REPORTING

- 
- Community Strategic Guidelines
 - National Strategy Plan
 - Rural Development Programme

- 
- Commission summary report
 - National summary report
 - Annual progress report

Objectives/targets
Baseline indicators

In/output indicators
Result indicators
Impact indicators

CMEF



Simple questions, difficult answers

e.g.:

- To what extent is the policy contributing to growth and jobs in rural areas and a strengthening of the EU's agrifood sector?
- To what extent is the policy contributing to a halt in biodiversity decline, better water management in quantity and quality and to climate change mitigation?
- To what extent is the policy contributing to improving governance?